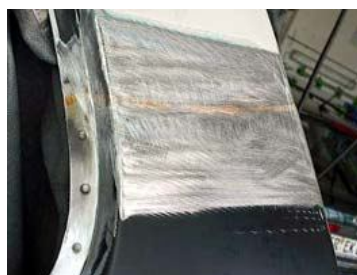


# welding machines from Woltersdorf

## LÖTMIG 280 *Program*

MIG-brazing, MIG-Aluminium welding and MAG-welding

- 1 machine with 2 welding torches fully equipped, only 1 gas bottle needed for MIG brazing and MIG Aluminium welding
- highest quality at welding and brazing due to of progame parameter control
- programs for car plates of the most car manufacturers



MIG-brazing: square butt joint at C-pillar of a car



MIG-Aluminium: engine bonnet of AlMg-alloy

**LÖTMIG 280 Program** is special designed for MIG-brazing, Aluminium welding and MAG-welding of thin plates and profiles, like galvanised high strength car plates or aluminium plates.

delivery: with accessories

Version mono: without PP100 welding torch for aluminium

### Technical data

Mains voltage:  
Welding current:  
Electronic control:

Wire drive:

Wire diameter:

Norm:

Dimensions:

Weight:

Article No.

### LÖTMIG 280 Program mono

3x400 V (50/60 Hz)  
18-280 A  
manual 20 steps  
Programme: P3-15 for brazing  
4-rolls in the machine

0,6 - 1,0 mm (Alu 1,0 mm)  
spool D/K200-300

EN 60974-1  
900x390x700 (820) mm  
97 kg  
10300-m

### LÖTMIG 280 Program

3x400 V (50/60 Hz)  
18-280 A  
manual 20 steps  
P3-15 for brazing; P5-14 for Alu  
4-rolls in the machine  
2-rolls in PP100

0,6 - 1,0 mm  
spool D/K300-300; D100

EN 60974-1  
900x390x700 (820) mm  
99 kg  
10300-d

**Manufacturer:**

**WOLTERSDORF Schweißmaschinen GmbH, Eichendamm 3, D-15569 Woltersdorf**  
Tel.:0049 (0) 3362/5398, Fax: 0049 (0) 3362/75307  
[www.woltersdorf-schweiss.de](http://www.woltersdorf-schweiss.de)